



**ALASKA DIVISION OF HOMELAND SECURITY &  
EMERGENCY MANAGEMENT**



**SITUATION REPORT 20-351 • DEC 16, 2020**

Toll-Free 1.800.478.2337

Anchorage Area 907.428.7000

SEOC 907.428.7100

<p><b><u>SEOC Preparedness Level</u></b></p> <p>Level 3 - Ongoing Active Response - 2020 December Southeast Storm</p>	<p><a href="http://ready.alaska.gov">http://ready.alaska.gov</a></p>	<p><b><u>National Terrorism Advisory System:</u></b></p> <p>View this site for the latest NTAS bulletin: <a href="#">read the current NTAS Bulletin here.</a></p>
<p><b><u>Maritime Security (MARSEC)</u></b></p> <p>Level:1-Minimum Appropriate Security Measures</p>	<p><b>WHO Novel Coronavirus Pandemic (COVID-19):</b></p> <p><a href="#">2019 Novel Coronavirus</a></p>	<p><b><u>Alaska Military Installation Force Protection Level:</u></b> FPCON Bravo</p>

(Significant changes from previous situation reports are in red.)

**THREAT LEVEL CHANGES:**

**Significant Issues:**

**2020 December Southeast Storm Disaster:**

SEOC remains at Level 3 and is actively engaged in response and initiation of recovery operations to Southeast Alaska communities impacted by the recent storm. In conjunction with Governor Dunleavy's Declaration of Disaster, operational planning is underway to conduct a preliminary damage assessment of the disaster area following the Christmas holiday.

**Haines:**

Haines Borough Emergency Operations Center (EOC) has implemented a full incident planning process with regular situation reports and operational periods. Provision for Borough staff rotation and time off is being made. Deployed State Division Supervisor is fully integrated with the Borough EOC and Mass Care operations.

Alaska Division of Geological and Geophysical Surveys geologists are meeting remotely with residents of the Beach Road landslide area that continues to be evacuated and unsafe for re-occupancy. Additional detailed geotechnical assessment is required to determine safety.

Sheltering and mass care support for survivors continue, with planning underway to transition to long-term recovery with active survivor case management. 14 survivors are sheltered in non-congregate shelters, while additional survivors are housed with family, neighbors, friends.

Community mental health and disaster crisis counseling is being provided.

SEOC Recovery Branch has met with the Haines EOC Finance Section to explain disaster cost tracking and reimbursement.

Survivors with Access and Functional Needs (AFN) are being actively addressed in coordination with the SEOC AFN Advisor/ Alaska State American with Disabilities Act Coordinator.

### **Other Southeast Alaska Communities:**

In Juneau, Red Cross is sheltering two survivors with damaged/destroyed homes.

Juneau, Skagway, and Hoonah have provided SEOC with preliminary disaster cost estimates for emergency protective measures and infrastructure damage.

### **Coronavirus (COVID-19) Pandemic:**

A unified command has been established at the SEOC. The SEOC continues to support statewide response to COVID-19.

### **State of Alaska Department of Health and Social Services (DHSS)**

DHSS is operating as the Medical Branch under the State EOC/Unified Command.

For more information about the outbreak refer to:

<https://covid19.alaska.gov/>

<https://www.cdc.gov/coronavirus/2019-ncov/index.html>

The Alaska DHSS website is located at <http://dhss.alaska.gov/Pages/default.aspx>

### **NTAS BULLETIN**

To read current advisories, select the link below.

<https://www.dhs.gov/national-terrorism-advisory-system>

### **Travel Alerts and Conditions**

COVID-19 Health Orders may affect travel. Check <https://covid19.alaska.gov/> for current Health Orders.

For current driving conditions dial 511 or link to <http://511.alaska.gov/>

### **Recent Earthquakes**

USGS Earthquake Information: <http://earthquake.usgs.gov/>

National Tsunami Warning Center: <http://ntwc.arh.noaa.gov/>

### **Alaska Volcanoes**

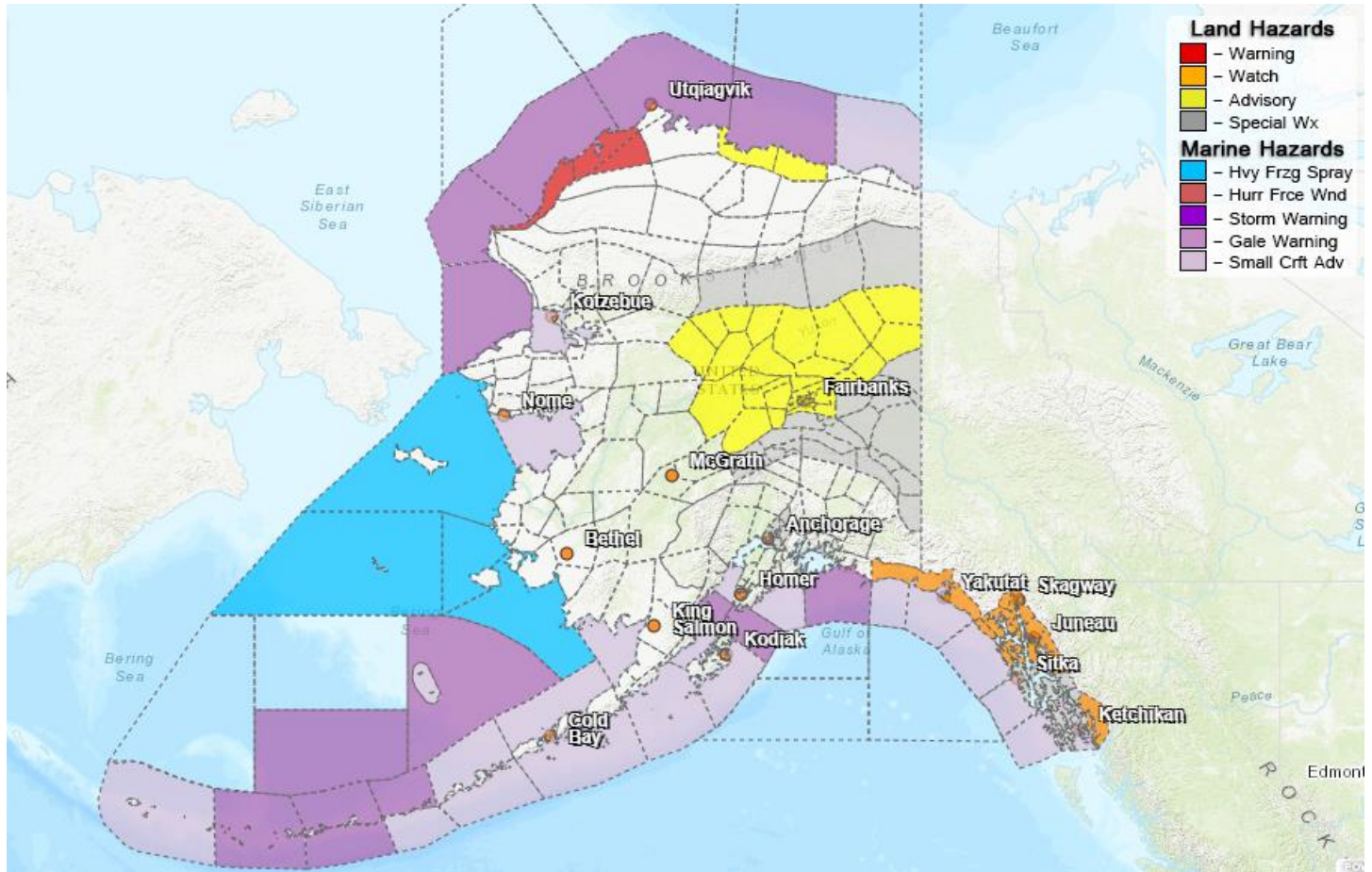
For Alaska Volcano updates, go to: <https://www.avo.alaska.edu/>

## Air Quality Index (AQI) Advisories

For the most up to date Air Quality Index Advisories:

<http://dec.alaska.gov/Applications/Air/airtoolsweb/Home/Index>

## Significant Weather:



A Blizzard Warning is in effect for the Western Arctic Coast until 6:00 P.M. today. Winds gusting as high as 45 mph will cause whiteout conditions in blowing snow. Significant drifting of the snow is likely. In addition, cold wind chills as low as 45 below zero are expected.

A Winter Storm Watch has been issued for the majority of the Alaska Panhandle, including Juneau, Haines, Gustavus, Skagway, Hoonah, Yakutat, Pelican, Tenakee Springs, Elfin Cove, and Hyder, from 9:00 A.M. tomorrow until 6:00 A.M. Saturday. Heavy snow possible. Total snow accumulations Thursday of 5 to 12 inches. Total snow accumulations Friday of 8 to 16 inches. Snow likely to continue into Saturday. Winds could gust as high as 35 mph.

Winter Weather Advisories are in effect for the following areas:

- Central Beaufort Sea Coast until 3:00 P.M. today. Winds gusting as high as 40 mph will cause areas of blowing and drifting snow, reducing visibility to one-half mile or less at times.
- Upper Koyukuk Valley into; 9:00 P.M. today. Strong winds and blowing snow are expected. Winds gusting as high as 45 mph will cause areas of blowing and drifting snow, reducing visibility.

A Wind Chill Advisory is in effect for much of the Central Interior until 3:00 P.M. Friday. Cold air and sustained wind speeds of 15 mph or more will create low wind chills. Expect wind chills to range from 40 below zero to 59 below zero.

A Special Weather Statement has been issued for the following areas:

- Anchorage & the Mat-Su Valley until 10:00 A.M. today. A band of snow stretching across northern Cook Inlet continues to produce periods of light snow across the Anchorage Bowl through the Mat-Su Valleys early this morning. Heavier pockets of snow are expected along the Glenn Highway from Anchorage to Palmer before precipitation ending by late this morning or sooner.
- Eastern Interior through Sunday. Temperatures will gradually fall into the teens and 20s below 0 by Thursday, with lows in the 20s and 30s below 0. Temperatures are expected to remain that cold through Sunday.
- Eastern Baranof & Southern Admiralty Islands & the Inner Channels from Kupreanof to Etolin Island. A series of storms that could result in heavy rain Thursday into Saturday with possible sea-level snow Thursday into Thursday night for portions of the central Panhandle. Rainfall amounts could range from 2 to 3 inches Thursday afternoon into Saturday.

For more information and the most current weather, Watches / Warnings / Advisories go to: <http://www.weather.gov/arh>

### **Avalanche Forecast:**



- Areas near Cordova, Haines, Valdez, and along the Richardson Highway with Moderate risk.

Check the Avalanche Forecast Center closest to your area for the most up to date information on Avalanche potential. <https://alaskasnow.org/> or <https://www.weather.gov/afc/avalanche>

### **Spills of Oil and Hazardous Substances**

The ADEC Spill Prevention and Response page is located at:

<http://dec.alaska.gov/spar/ppr/spill-information/response/>

## **Alaska Cyber Security Information**

State Employees may sign up for cybersecurity notifications and alerts at

<https://oit.alaska.gov/Security>

**The Next Situation Report:** will be 17 December 2020. A significant change in the situation or the threat level will prompt an interim report.

This report is posted on the internet at <https://ready.alaska.gov/sitrep>. To register for email distribution, go to <http://list.state.ak.us/mailman/listinfo/dhsem.situation.report>. Direct questions regarding this report to the SEOC at 907-428-7100 or [seoc@alaska.gov](mailto:seoc@alaska.gov).